

OFFICE OF THE
PARLIAMENTARY BUDGET OFFICER



BUREAU DU
DIRECTEUR PARLEMENTAIRE DU BUDGET

Infrastructure Stimulus Fund Reporting on Activities to Promote Budget Transparency

Ottawa, December 11, 2009

www.parl.gc.ca/pbo-dpb

The *Parliament of Canada Act* mandates the Parliamentary Budget Officer (PBO) to provide independent analysis to Parliament on the state of the nation's finances, trends in the national economy and spending estimates of the government.

The Parliamentary Budget Officer is conducting research on the Infrastructure Stimulus Fund (ISF) as part of the mandate for analysis of spending estimates.

Key Points of this Note:

- The ISF was introduced in Budget 2009 to support provinces, territories and municipalities with the “rehabilitation or retrofit of existing infrastructure assets, or the construction of new infrastructure assets*”. The principal objectives of the ISF were to *stimulate economic growth* and “to create jobs**”. *The government has yet to provide a performance reporting framework to assess the success of the ISF in achieving these objectives.*
- The PBO has received basic project data on all of the ISF projects approved as of September 22, 2009, as well as the first set of quarterly recipient progress reports as of September 30, 2009, and has undertaken an assessment of these datasets. To promote budget transparency, PBO has summarized the applications and claims data by project type according to a number of indicators (tables attached).
- The September data indicate approved applications totalling 3,035 projects in Canada valued at \$7.4 billion with an average value of \$2.5 million per project. The total approved federal contribution from the ISF is indicated to be \$2.8 billion. With regard to the type of projects, more than two thirds of the money has been dedicated to projects related to highway and regional transit, local roads, water and wastewater.
- According to claims data provided (which excluded Quebec due to timing issues), the number of approved applications with approved claims represented 77 percent of total value. The data indicate that a relatively large proportion of the projects will not be completed until late in 2010-11. The average duration of the projects is about 11 months.

The PBO is working with Infrastructure Canada to continue to obtain the data required to support an assessment of program performance.

*Canada's Economic Action Plan- Budget 2009

**Infrastructure Canada - Department Performance Report 2008-09, p.4

Prepared by: Brad Recker and Peter Weltman

Comments are welcome. Please contact Brad Recker (e-mail: reckeb@parl.gc.ca) or Peter Weltman (e-mail: weltmp@parl.gc.ca) for further information.

I. Background

The Parliamentary Budget Officer (PBO) released a discussion paper in February 2009 describing the information that should be provided to Parliament to enable it to fulfill its budgetary oversight role. The key properties of the information identified were that it be **accurate**, **timely**, and **easily understood**.

The PBO also published a budget monitoring framework designed to enumerate stages of implementation for each stimulus measure and report on program performance using the same measurement framework that would have been required by the government by Treasury Board policy.¹

II. The Infrastructure Stimulus Fund

The PBO is undertaking analysis of this program in an attempt to assist Parliament in understanding potential program outcomes and risks. Specifically, the PBO is committed to analyzing the timing of project activity, the ability of the government to successfully deliver the appropriated funding within the timelines specified by the program, and the program's ability to meet its planned objectives to support economic growth and jobs.

Infrastructure Stimulus Fund – Summary Tables

The attached tables represent basic summaries of two datasets PBO received from Infrastructure Canada related to the planned use of the Infrastructure Stimulus Fund (ISF). Tables have been created for each province and territory based on the categories provided in each of the datasets.

Approved Applications Dataset

The first dataset (the applications dataset) was received by PBO on November 6, 2009, and contains application information from 3,035 individual projects in all provinces and territories for which applications had been approved as of September 22, 2009. Projects in this dataset are arranged by province and categorized as one of the 15 project types specified in the ISF program. Detailed information contained in the dataset includes project value, approved federal and provincial contributions, expected construction start and completion dates, and whether projects were tender ready, with non-federal funding and relevant permits in place.

Approved Claims Dataset

The second dataset (approved claims dataset) was received by PBO on November 20, 2009 and includes data on 1,643 of the 3,035 projects identified in the first dataset, for 9 provinces (data for Quebec is unavailable) and 3 territories for which claims reports were filed. This dataset included additional information such as updated forecast start and completion dates, actual start dates for those projects that had been started, an indication of project completion and the value of initial ISF claims that had been filed with Infrastructure Canada as of September 30, 2009.

¹ Budget 2009 Documents from the PBO are available at: <http://www2.parl.gc.ca/Sites/POB-DPB/BudgetInformation.aspx>.

Using these datasets, PBO has prepared summary tables and charts for each of Canada's provinces and territories. PBO will update these tables, as new information on approved claims is received from Infrastructure Canada.

There are two main tables produced for each province and territory: the first is entitled "Approved Applications" and includes information on each of the 3,035 ISF-approved projects from the applications dataset, including the number of projects of each project type, their total and average value, and the approved federal contribution; the second, entitled "Approved Claims", contains information from the approved claims dataset including the number of projects started, completed and planned start and end dates.

Finally, each summary table includes a chart detailing the planned start and end dates of each of the ISF projects for which a claim has been approved and for which work is not yet complete. The start and completion dates used here are those identified as the updated forecast start and completion dates, or the actual start dates. If, however, updated start and completion dates have not been provided, then the original information provided has been used.

PBO Findings

Drawing from the approved applications dataset, we note that 68% of the approved projects are related to roads and wastewater (sewers). We also note that the average value of all of the projects, at \$2.5M, can be considered to be small. It can be argued that these findings would be consistent with the program objectives of providing economic stimulus in that typically, these types of projects tend to be of short duration, low complexity and lend themselves to more rapid implementation than other types of infrastructure projects.

Data Limitations for Performance Reporting

The dataset provides a figure for "value of work completed" of \$245.5M which represents 4% of the total value of approved projects outside of Quebec. This number is a weighted average of the project completion rate multiplied by the total project value.

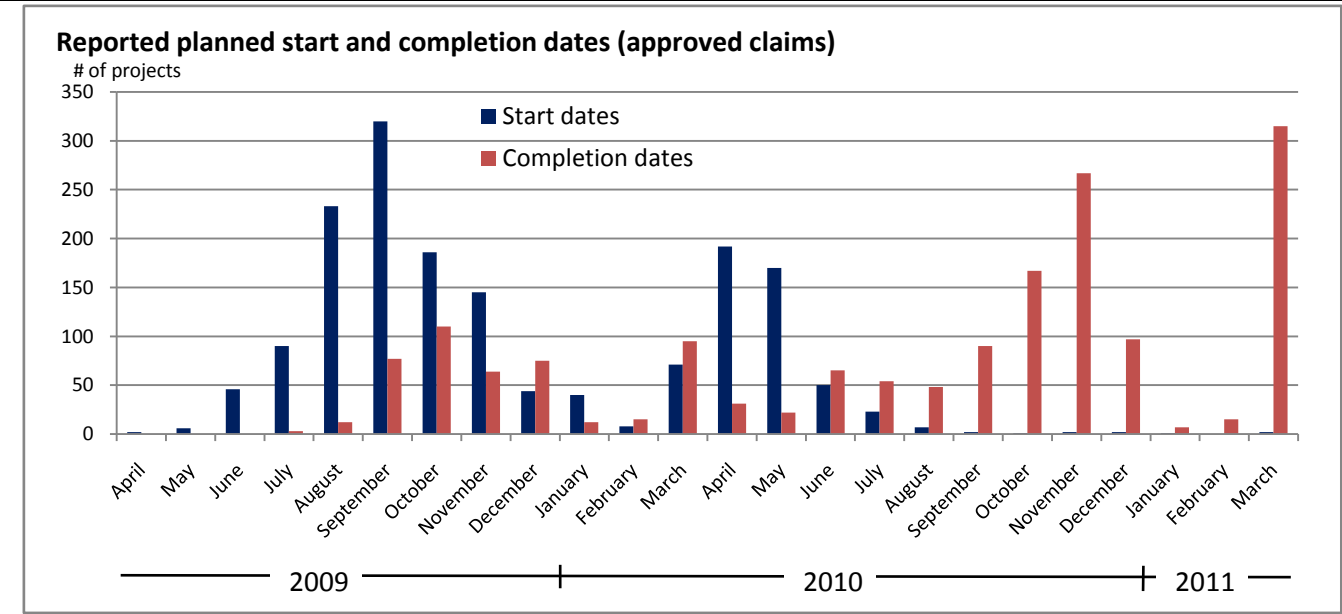
The "value of work completed" is a critical performance indicator. Unfortunately, at the present time, this value is not deemed to be an accurate assessment of program performance due to the limitations of the dataset. As of September 30, 2009, only 54% of approved projects (76% of those outside Quebec) have submitted a quarterly report. We also understand from officials at Infrastructure Canada that the data on project completion rates is unreliable because of inconsistent and incomplete reporting. As a result, at this point, the PBO is unable to provide an assessment of the ISF's progress. It is important that the data quality and gaps be addressed so that Parliamentarians will be provided adequate and reliable information on completion rates.

Upon receipt of more complete claims data, PBO will undertake to an assessment of program performance.

Canada - (Quebec Excluded)

Approved Applications

Project type	Number of projects	Value of projects (\$M)	Average value (\$M)	Federal contribution (\$M)	Federal contribution (%)	Average duration (months)
Airport	12	49.3	4.1	17.0	34.4	13.4
Brownfield Redevelopment	2	2.0	1.0	0.7	33.3	11.9
Community Centres and Community Services	10	93.4	9.3	33.1	35.4	14.2
Cultural	43	160.8	3.7	61.9	38.5	10.6
Disaster Mitigation	6	53.0	8.8	20.9	39.5	14.5
Highway & Regional Transit	286	1,353.8	4.7	645.1	47.7	8.1
Local Road	1,027	1,294.0	1.3	429.8	33.2	11.6
Municipal Buildings	293	750.9	2.6	245.0	32.6	10.2
Parks and Trails	266	229.7	0.9	79.0	34.4	13.4
Port and Cruiseship	13	101.8	7.8	44.2	43.4	12.8
Public Transit	48	504.7	10.5	168.2	33.3	14.2
Solid Waste Management	25	43.7	1.7	14.6	33.4	11.3
Water and Wastewater	604	1,460.8	2.4	474.3	32.5	12.4
Total	2,635	6,097.9	2.3	2,233.7	36.6	11.8



Approved Claims

	Number of projects	Value of projects (\$M)	Average value (\$M)	Federal contribution (\$M)
Total approved claims	1,643	4,721.6	2.9	1,733.5
Total projects started	396	1,343.3	3.4	512.0
Total projects completed	34	24.0	0.7	14.5
Total projects to start(ed) 2009-10	1,191	3,662.7	3.1	1,306.5
Total (to be) completed 2009-10	463	519.8	1.1	199.2
Total projects to start(ed) 2010-11	452	1,058.9	2.3	427.0
Total (to be) completed 2010-11	1,178	4,187.8	3.6	1,534.3
Value of work completed to date		245.5		
Total claimed (inc. provincial)		23.6		
ISF claim amount		11.8		

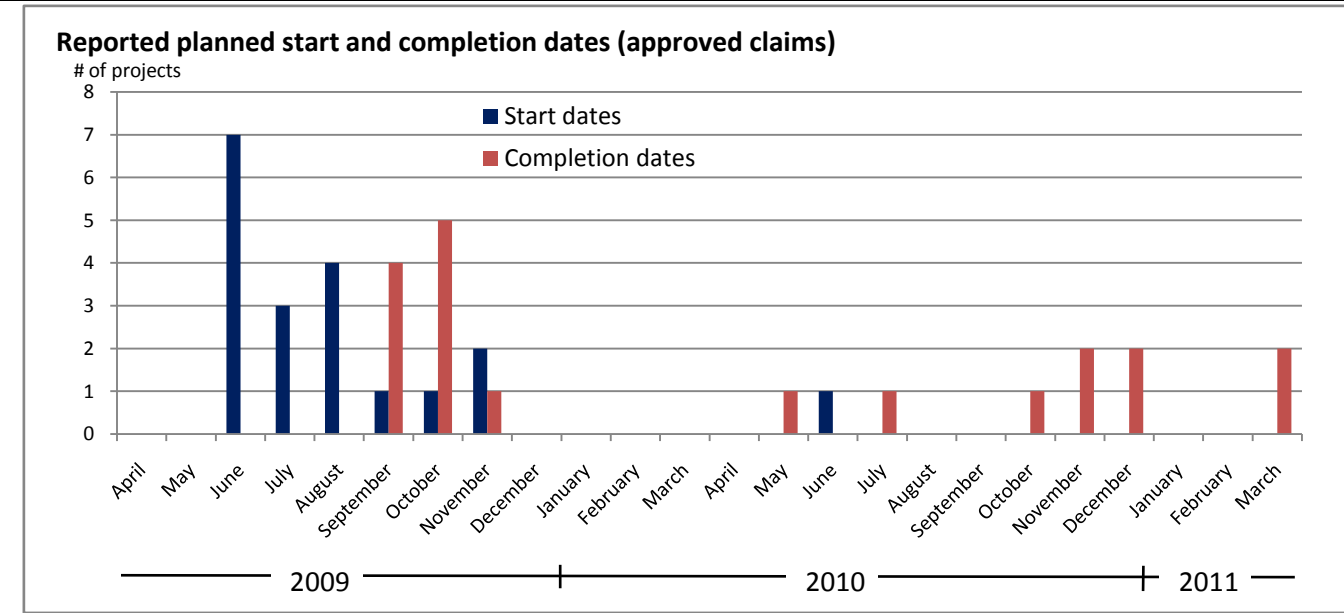
Average duration of approved projects (months) 11.2

	(per cent of projects)	(per cent of value)
Per cent of approved applications with approved claims	62.4	77.4

Newfoundland and Labrador

Approved Applications

Project type	Number of projects	Value of projects (\$M)	Average value (\$M)	Federal contribution (\$M)	Federal contribution (%)	Average duration (months)
Airport	1	9.0	9.0	3.0	33.3	13.0
Brownfield Redevelopment						
Community Centres and Community Services						
Cultural						
Disaster Mitigation						
Highway & Regional Transit	11	30.8	2.8	15.4	50.0	4.1
Local Road	1	3.6	3.6	1.2	33.3	17.0
Municipal Buildings	2	12.6	6.3	4.2	33.3	15.5
Parks and Trails						
Port and Cruiseship						
Public Transit						
Solid Waste Management						
Water and Wastewater	7	83.1	11.9	27.7	33.3	14.2
Total	22	139.2	6.3	51.5	37.0	9.3



Approved Claims

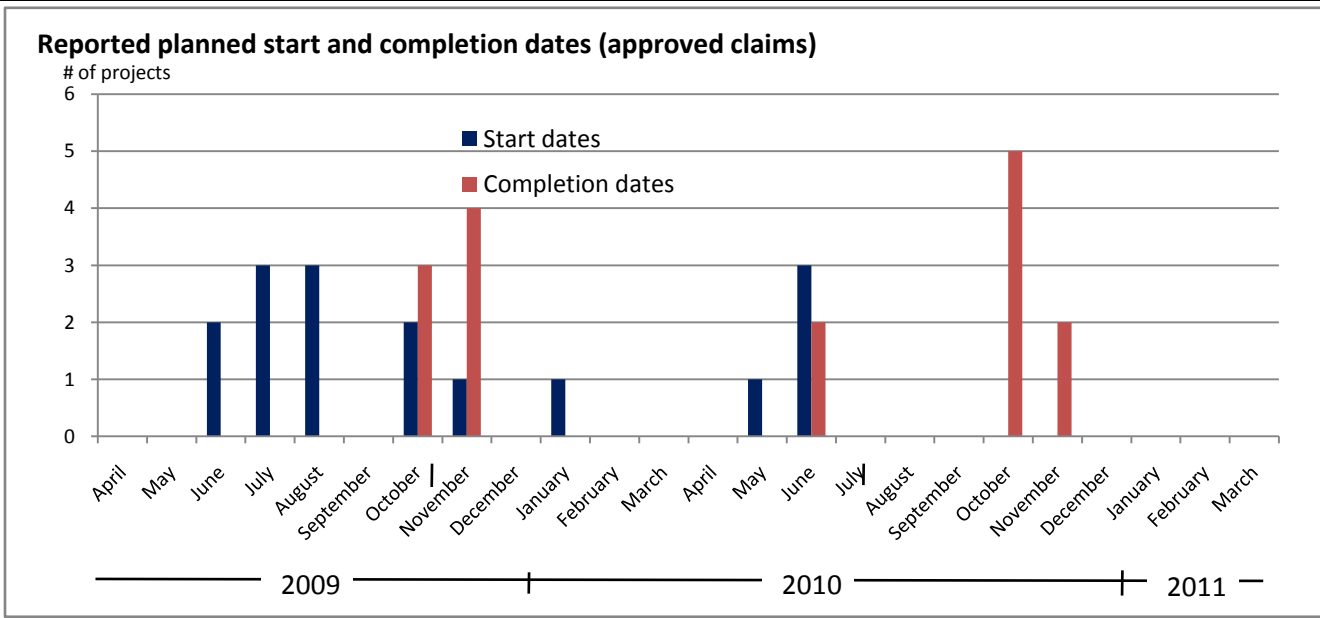
	Number of projects	Value of projects (\$M)	Average value (\$M)	Federal contribution (\$M)
Total approved claims	19	130.6	6.9	47.2
Total projects started	15	115.9	7.7	41.1
Total projects completed	4	8.7	2.2	3.6
Total projects to start(ed) 2009-10	18	128.1	7.1	46.4
Total (to be) completed 2009-10	10	23.6	2.4	10.4
Total projects to start(ed) 2010-11	1	2.5	2.5	0.8
Total (to be) completed 2010-11	9	106.9	11.9	36.8
Value of work completed to date		23.3		
Total claimed (inc. provincial)		6.8		
ISF claim amount		3.4		

Average duration of approved projects (months)		8.3
	(per cent of projects)	(per cent of value)
Per cent of approved applications with approved claims	86.4	93.8

Prince Edward Island

Approved Applications

Project type	Number of projects	Value of projects (\$M)	Average value (\$M)	Federal contribution (\$M)	Federal contribution (%)	Average duration (months)
Airport						
Brownfield Redevelopment						
Community Centres and Community Services						
Cultural	3	2.3	0.8	0.8	33.3	6.6
Disaster Mitigation						
Highway & Regional Transit	6	24.0	4.0	12.0	50.0	6.5
Local Road	4	3.2	0.8	1.6	50.0	3.2
Municipal Buildings	3	1.0	0.3	0.3	33.3	3.9
Parks and Trails	1	0.9	0.9	0.3	33.3	6.0
Port and Cruiseship						
Public Transit						
Solid Waste Management						
Water and Wastewater	1	3.0	3.0	1.0	33.3	17.2
Total	18	34.4	1.9	16.0	46.5	5.9



Approved Claims

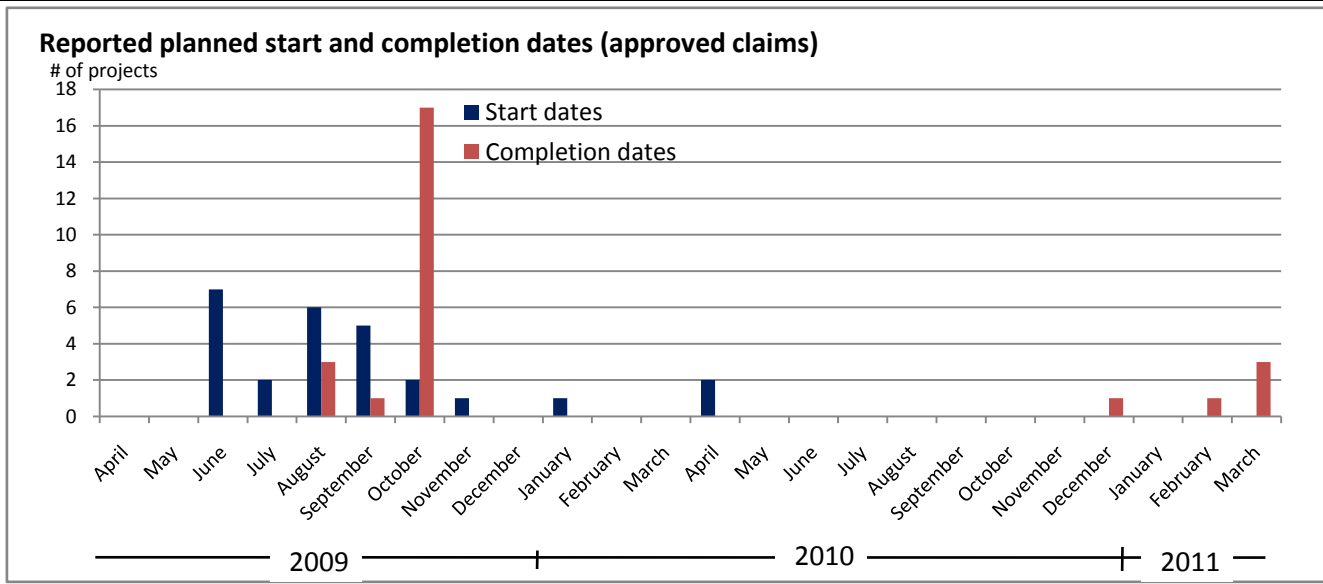
	Number of projects	Value of projects (\$M)	Average value (\$M)	Federal contribution (\$M)
Total approved claims	16	33.3	2.1	15.6
Total projects started	7	16.2	2.3	7.6
Total projects completed				
Total projects to start(ed) 2009-10	12	19.3	1.6	8.6
Total (to be) completed 2009-10	7	6.7	1.0	3.2
Total projects to start(ed) 2010-11	4	14.0	3.5	7.0
Total (to be) completed 2010-11	9	26.6	3.0	12.4
Value of work completed to date		5.2		
Total claimed (inc. provincial)		2.0		
ISF claim amount		1.0		

Average duration of approved projects (months)	6.2
Per cent of approved applications with approved claims	(per cent of projects) 88.9 (per cent of value) 96.6

Nova Scotia

Approved Applications

Project type	Number of projects	Value of projects (\$M)	Average value (\$M)	Federal contribution (\$M)	Federal contribution (%)	Average duration (months)
Airport						
Brownfield Redevelopment						
Community Centres and Community Services						
Cultural	1	14.4	14.4	7.2	50.0	20.8
Disaster Mitigation						
Highway & Regional Transit	61	135.9	2.2	66.4	48.9	4.8
Local Road	23	26.2	1.1	8.7	33.3	10.0
Municipal Buildings	4	8.6	2.2	2.9	33.3	8.8
Parks and Trails	6	7.3	1.2	3.1	43.1	13.2
Port and Cruiseship						
Public Transit						
Solid Waste Management	2	5.0	2.5	1.7	33.3	10.0
Water and Wastewater	7	10.1	1.4	3.4	33.3	8.3
Total	104	207.5	2.0	93.4	45.0	7.1



Approved Claims

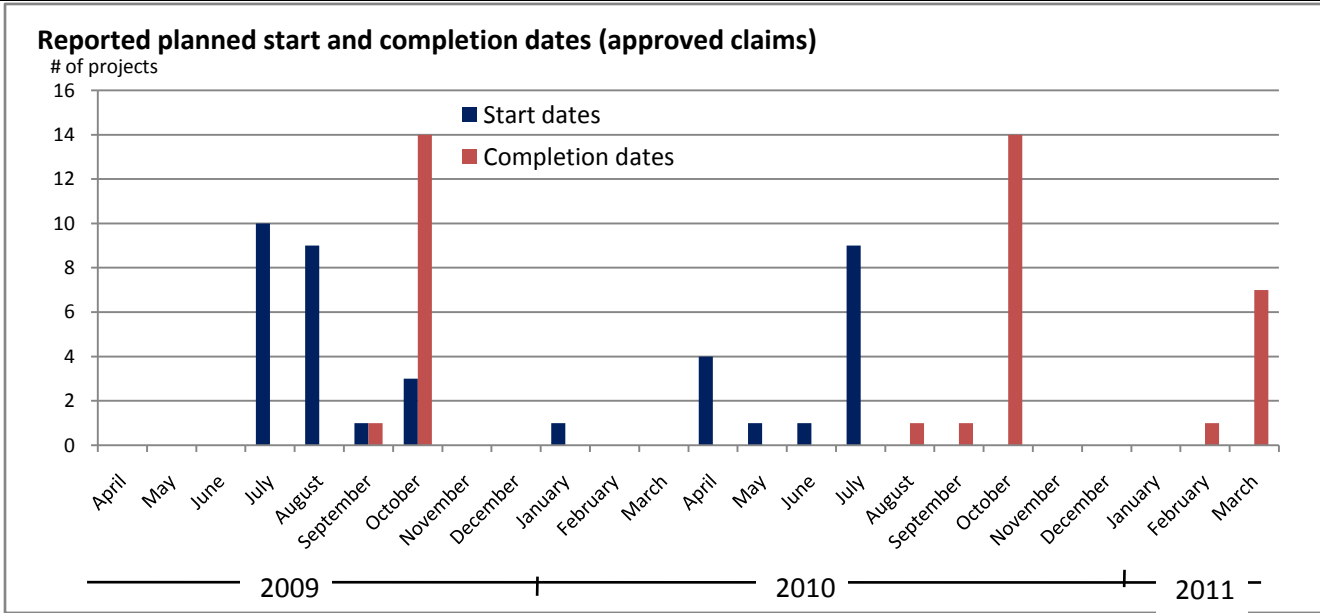
	Number of projects	Value of projects (\$M)	Average value (\$M)	Federal contribution (\$M)
Total approved claims	26	55.8	2.1	27.9
Total projects started	15	28.9	1.9	14.4
Total projects completed				
Total projects to start(ed) 2009-10	24	40.9	1.7	20.4
Total (to be) completed 2009-10	21	37.2	1.8	18.6
Total projects to start(ed) 2010-11	2	15.0	7.5	7.5
Total (to be) completed 2010-11	5	18.7	3.7	9.3
Value of work completed to date		15.6		
Total claimed (inc. provincial)		7.4		
ISF claim amount		3.7		

Average duration of approved projects (months)		4.9
	(per cent of projects)	(per cent of value)
Per cent of approved applications with approved claims	25.0	26.9

New Brunswick

Approved Applications

Project type	Number of projects	Value of projects (\$M)	Average value (\$M)	Federal contribution (\$M)	Federal contribution (%)	Average duration (months)
Airport						
Brownfield Redevelopment						
Community Centres and Community Services	1	15.8	15.8	5.3	33.3	15.0
Cultural						
Disaster Mitigation	1	3.1	3.1	1.6	50.0	15.0
Highway & Regional Transit	29	103.3	3.6	42.6	41.3	4.6
Local Road						
Municipal Buildings	1	20.0	20.0	5.0	25.0	15.9
Parks and Trails						
Port and Cruiseship	1	61.2	61.2	26.4	43.1	21.0
Public Transit						
Solid Waste Management						
Water and Wastewater	8	29.2	3.7	9.7	33.3	10.4
Total	41	232.6	5.7	90.6	38.9	6.9



Approved Claims

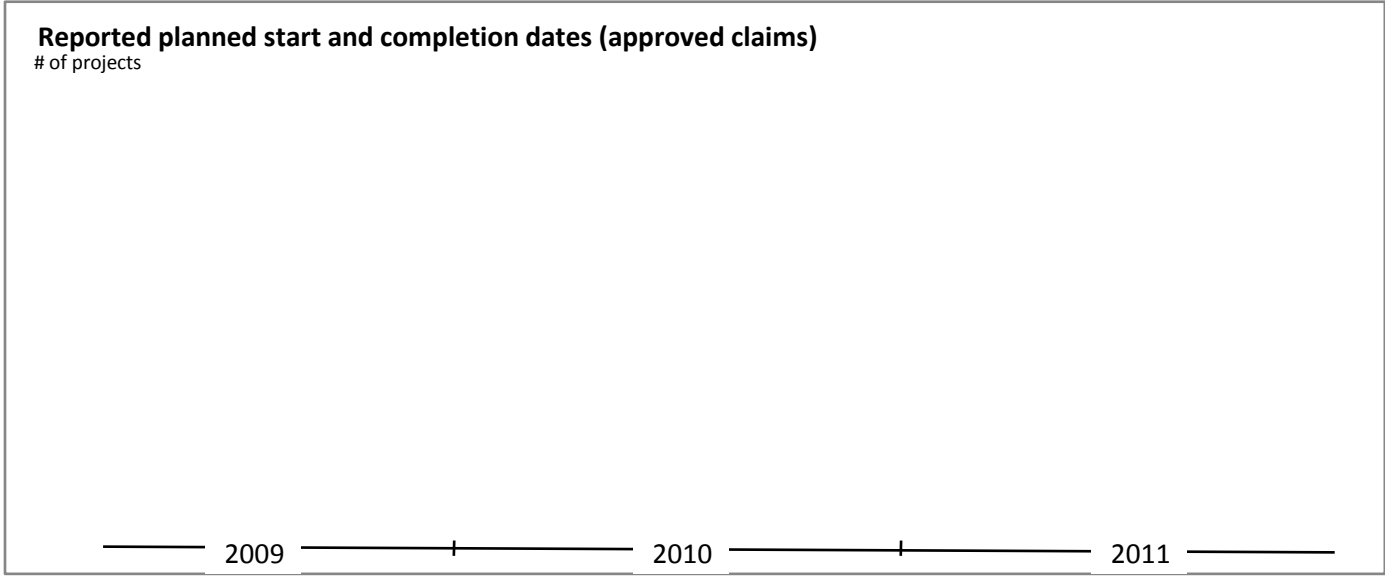
	Number of projects	Value of projects (\$M)	Average value (\$M)	Federal contribution (\$M)
Total approved claims	39	227.4	5.8	88.8
Total projects started	20	134.0	6.7	53.8
Total projects completed	1	0.8	0.8	0.4
Total projects to start(ed) 2009-10	24	179.3	7.5	68.8
Total (to be) completed 2009-10	15	28.6	1.9	14.3
Total projects to start(ed) 2010-11	15	48.1	3.2	20.0
Total (to be) completed 2010-11	24	198.8	8.3	74.5
Value of work completed to date		4.0		
Total claimed (inc. provincial)				
ISF claim amount				

Average duration of approved projects (months)		6.9
	(per cent of projects)	(per cent of value)
Per cent of approved applications with approved claims	95.1	97.8

Quebec

Approved Applications

Project type	Number of projects	Value of projects (\$M)	Average value (\$M)	Federal contribution (\$M)	Federal contribution (%)	Average duration (months)
Airport						
Brownfield Redevelopment						
Community Centres and Community Services	1	4.9	4.9	1.6	33.3	11.0
Cultural	33	187.3	5.7	62.4	33.3	8.1
Disaster Mitigation						
Highway & Regional Transit	157	560.8	3.6	272.3	48.6	3.9
Local Road	4	20.8	5.2	6.9	33.3	11.0
Municipal Buildings	7	55.2	7.9	20.3	36.8	8.1
Parks and Trails	5	22.0	4.4	7.3	33.3	6.3
Port and Cruiseship	8	70.2	8.8	34.5	49.1	11.8
Public Transit	4	80.3	20.1	26.5	33.0	12.2
Solid Waste Management						
Water and Wastewater	181	341.6	1.9	113.4	33.2	21.8
Total	400	1,343.3	3.4	545.3	40.6	13.1



Approved Claims

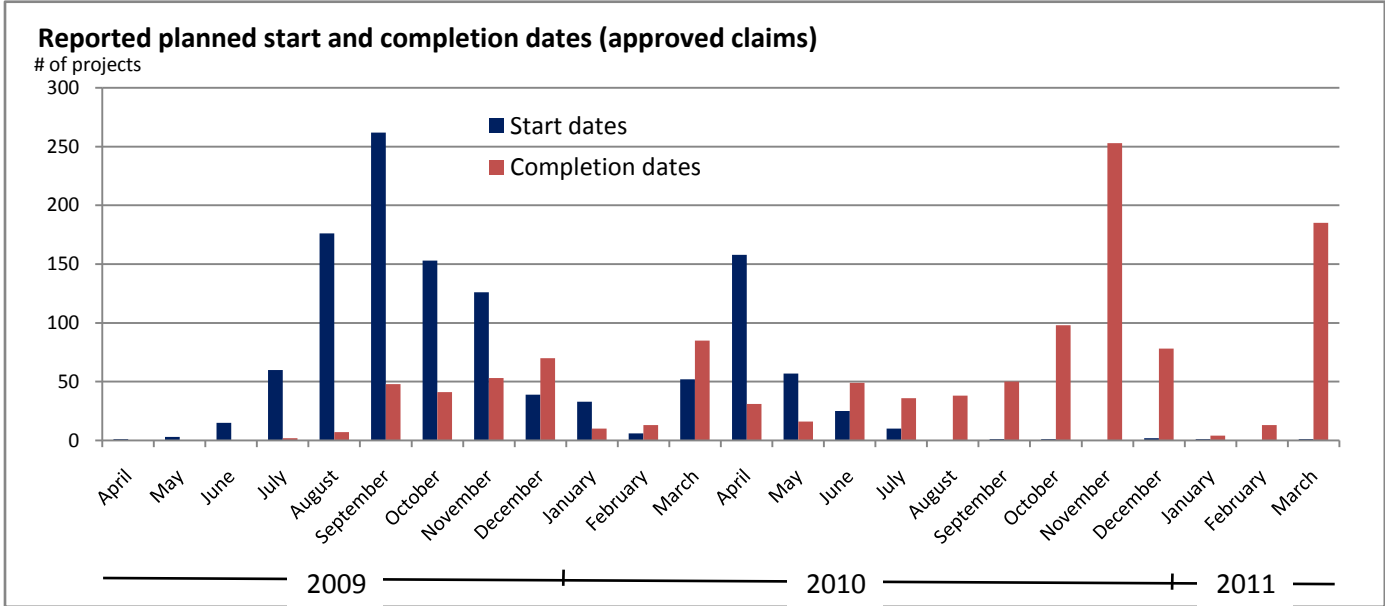
	Number of projects	Value of projects (\$M)	Average value (\$M)	Federal contribution (\$M)
Total approved claims				
Total projects started				
Total projects completed				
Total projects to start(ed) 2009-10				
Total (to be) completed 2009-10				
Total projects to start(ed) 2010-11				
Total (to be) completed 2010-11				
Value of work completed to date				
Total claimed (inc. provincial)				
ISF claim amount				

Average duration of approved projects (months)
(per cent of (per cent of value)
Per cent of approved applications with approved claims

Ontario

Approved Applications

Project type	Number of projects	Value of projects (\$M)	Average value (\$M)	Federal contribution (\$M)	Federal contribution (%)	Average duration (months)
Airport	8	37.1	4.6	12.4	33.3	11.3
Brownfield Redevelopment	2	2.0	1.0	0.7	33.3	11.9
Community Centres and Community Services						
Cultural	28	92.2	3.3	30.9	33.5	10.8
Disaster Mitigation	3	26.5	8.8	8.8	33.3	14.5
Highway & Regional Transit	1	10.0	10.0	5.0	50.0	15.0
Local Road	747	951.2	1.3	312.9	32.9	12.3
Municipal Buildings	253	673.1	2.7	223.7	33.2	10.2
Parks and Trails	168	150.6	0.9	50.3	33.4	15.6
Port and Cruiseship						
Public Transit	45	388.7	8.6	129.6	33.3	13.9
Solid Waste Management	19	33.9	1.8	11.3	33.3	12.7
Water and Wastewater	446	1,014.8	2.3	338.3	33.3	14.1
Total	1,720	3,380.2	2.0	1,123.7	33.2	13.1



Approved Claims

	Number of projects	Value of projects (\$M)	Average value (\$M)	Federal contribution (\$M)
Total approved claims	1,182	2,763.8	2.3	916.6
Total projects started	256	646.7	2.5	215.2
Total projects completed	22	7.2	0.3	7.2
Total projects to start(ed) 2009-10	926	2,405.1	2.6	798.0
Total (to be) completed 2009-10	329	277.1	0.8	92.0
Total projects to start(ed) 2010-11	256	358.7	1.4	118.5
Total (to be) completed 2010-11	851	2,472.8	2.9	824.6
Value of work completed to date		117.1		
Total claimed (inc. provincial)				
ISF claim amount				

Average duration of approved projects (months) 12.5

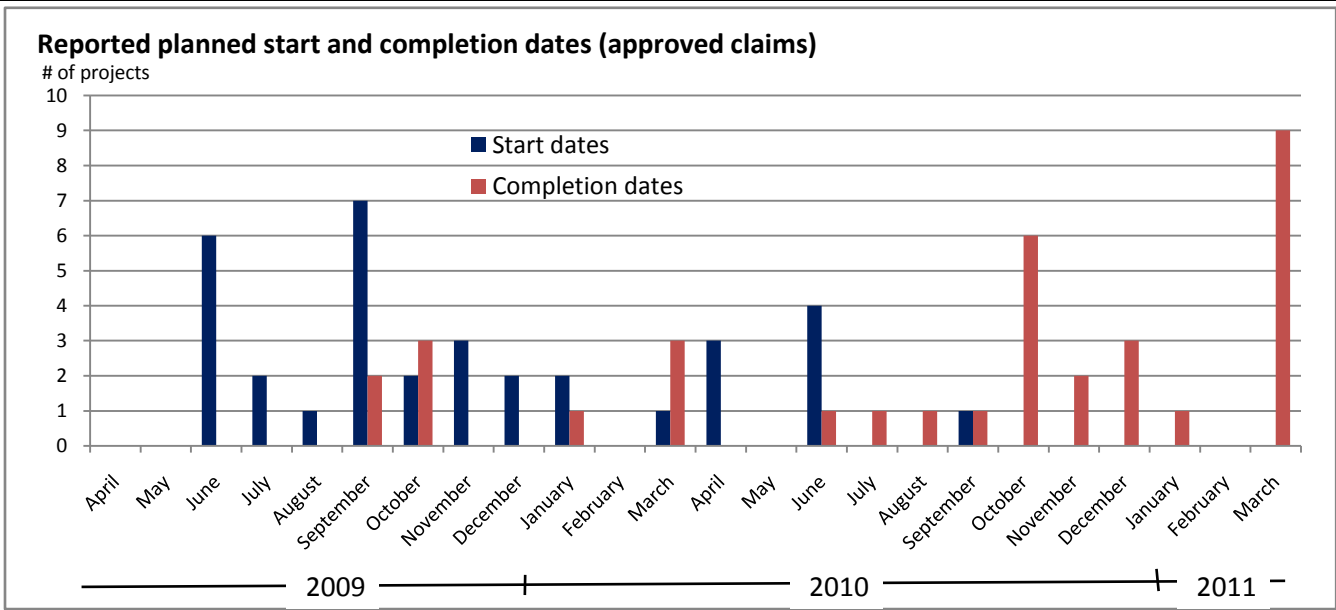
(per cent of projects) (per cent of value)

Per cent of approved applications with approved claims 68.7 81.8

Manitoba

Approved Applications

Project type	Number of projects	Value of projects (\$M)	Average value (\$M)	Federal contribution (\$M)	Federal contribution (%)	Average duration (months)
Airport						
Brownfield Redevelopment						
Community Centres and Community Services	8	41.6	5.2	13.0	31.2	13.8
Cultural	4	8.7	2.2	3.7	42.9	13.0
Disaster Mitigation						
Highway & Regional Transit	15	188.6	12.6	93.6	49.6	12.2
Local Road	34	22.2	0.7	7.4	33.3	8.7
Municipal Buildings						
Parks and Trails	27	23.8	0.9	9.8	41.1	9.0
Port and Cruiseship						
Public Transit						
Solid Waste Management	2	0.9	0.4	0.3	33.3	4.0
Water and Wastewater	17	32.5	1.9	10.7	32.8	5.6
Total	107	318.3	3.0	138.5	43.5	10.6



Approved Claims

	Number of projects	Value of projects (\$M)	Average value (\$M)	Federal contribution (\$M)
Total approved claims	34	238.3	7.0	112.2
Total projects started	10	111.5	11.2	54.0
Total projects completed	2	5.4	2.7	2.7
Total projects to start(ed) 2009-10	26	209.8	8.1	99.0
Total (to be) completed 2009-10	9	19.3	2.1	9.5
Total projects to start(ed) 2010-11	8	28.5	3.6	13.3
Total (to be) completed 2010-11	25	219.1	8.8	102.8
Value of work completed to date		44.4		
Total claimed (inc. provincial)				
ISF claim amount				

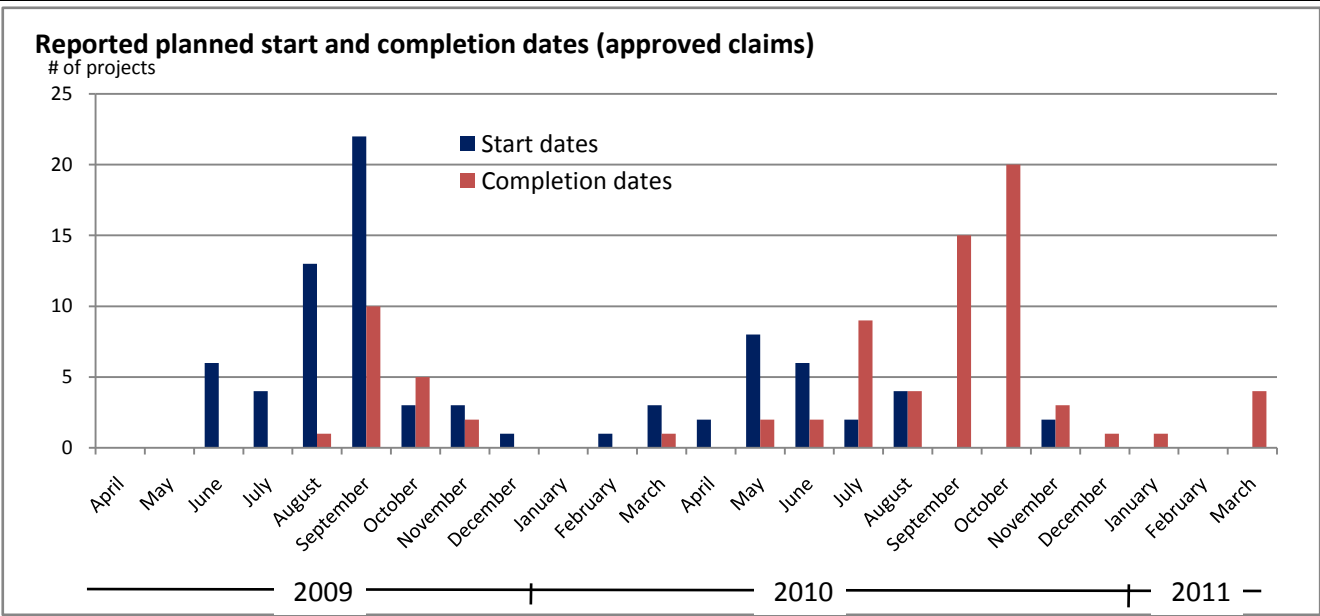
Average duration of approved projects (months)	10.0
--	------

	(per cent of projects)	(per cent of value)
Per cent of approved applications with approved claims	31.8	74.9

Saskatchewan

Approved Applications

Project type	Number of projects	Value of projects (\$M)	Average value (\$M)	Federal contribution (\$M)	Federal contribution (%)	Average duration (months)
Airport						
Brownfield Redevelopment						
Community Centres and Community Services						
Cultural						
Disaster Mitigation						
Highway & Regional Transit	25	140.0	5.6	70.0	50.0	8.9
Local Road	91	72.1	0.8	23.8	33.0	11.4
Municipal Buildings						
Parks and Trails						
Port and Cruiseship						
Public Transit						
Solid Waste Management						
Water and Wastewater	28	102.6	3.7	27.2	26.5	5.2
Total	144	314.6	2.2	120.9	38.4	10.8



Approved Claims

	Number of projects	Value of projects (\$M)	Average value (\$M)	Federal contribution (\$M)
Total approved claims	80	243.1	3.0	100.5
Total projects started	30	111.9	3.7	53.0
Total projects completed	3	1.8	0.6	0.6
Total projects to start(ed) 2009-10	56	207.6	3.7	85.8
Total (to be) completed 2009-10	19	28.7	1.5	10.0
Total projects to start(ed) 2010-11	24	35.5	1.5	14.7
Total (to be) completed 2010-11	61	214.4	3.5	90.6
Value of work completed to date		7.8		
Total claimed (inc. provincial)		2.7		
ISF claim amount		1.3		

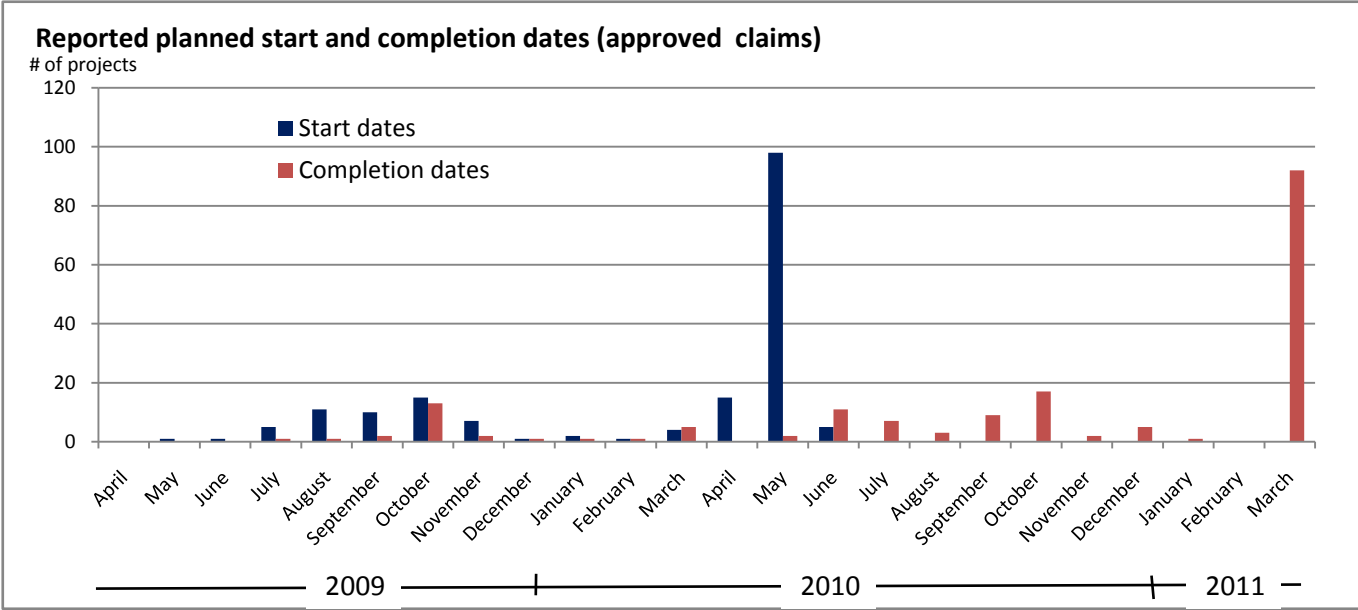
Average duration of approved projects (months)	7.2
--	-----

	(per cent of projects)	(per cent of value)
Per cent of approved applications with approved claims	55.6	77.3

Alberta

Approved Applications

Project type	Number of projects	Value of projects (\$M)	Average value (\$M)	Federal contribution (\$M)	Federal contribution (%)	Average duration (months)
Airport						
Brownfield Redevelopment						
Community Centres and Community Services	1	36.0	36.0	14.8	41.1	16.9
Cultural	3	40.2	13.4	18.6	46.3	13.3
Disaster Mitigation						
Highway & Regional Transit	97	501.6	5.2	234.4	46.7	11.4
Local Road	35	143.2	4.1	46.7	32.6	8.8
Municipal Buildings	2	4.9	2.4	1.6	33.3	12.4
Parks and Trails	13	5.4	0.4	2.7	50.0	12.0
Port and Cruiseship						
Public Transit	3	116.0	38.7	38.7	33.3	18.9
Solid Waste Management	1	1.9	1.9	0.6	33.3	5.0
Water and Wastewater	58	159.9	2.8	48.5	30.3	7.3
Total	213	1,009.1	4.7	406.6	40.3	10.5



Approved Claims

	Number of projects	Value of projects (\$M)	Average value (\$M)	Federal contribution (\$M)
Total approved claims	176	816.7	4.6	327.5
Total projects started	23	119.2	5.2	43.4
Total projects completed				
Total projects to start(ed) 2009-10	58	369.9	6.4	129.7
Total (to be) completed 2009-10	27	70.0	2.6	27.4
Total projects to start(ed) 2010-11	118	446.7	3.8	197.8
Total (to be) completed 2010-11	149	746.7	5.0	300.1
Value of work completed to date		15.2		
Total claimed (inc. provincial)		3.9		
ISF claim amount		2.0		

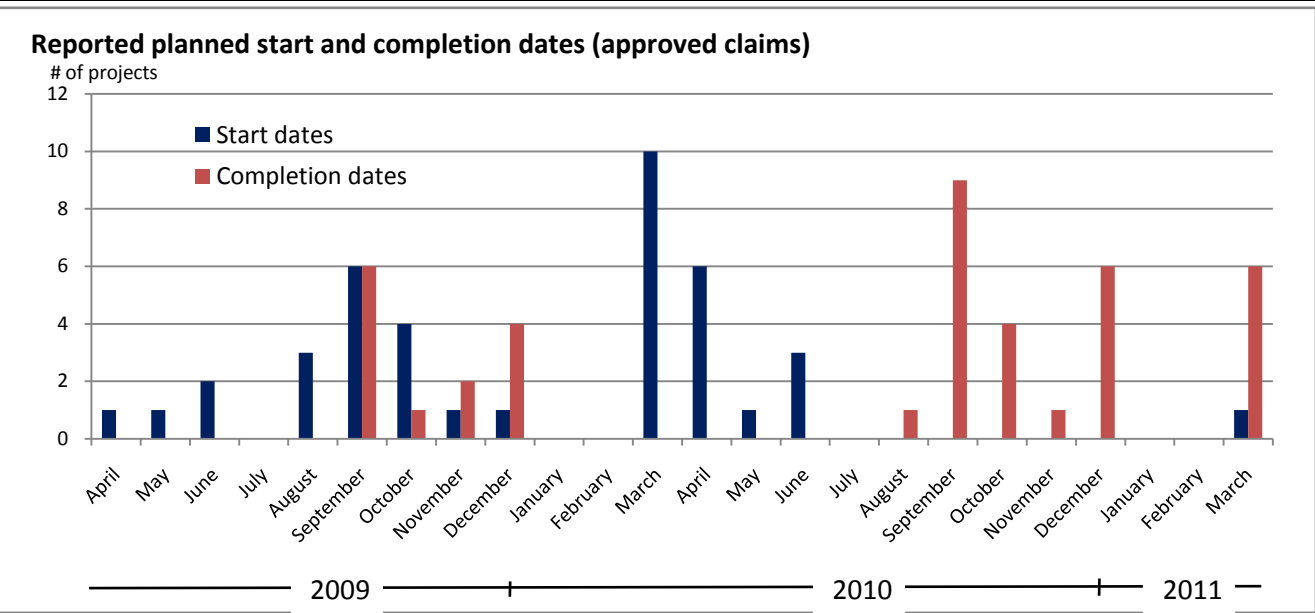
Average duration of approved projects (months) 9.1

	(per cent of projects)	(per cent of value)
Per cent of approved applications with approved claims	82.6	80.9

British Columbia

Approved Applications

Project type	Number of projects	Value of projects (\$M)	Average value (\$M)	Federal contribution (\$M)	Federal contribution (%)	Average duration (months)
Airport						
Brownfield Redevelopment						
Community Centres and Community Services						
Cultural	4	3.1	0.8	0.7	22.9	5.5
Disaster Mitigation	2	23.4	11.7	10.5	45.0	14.1
Highway & Regional Transit	39	218.0	5.6	104.8	48.1	7.1
Local Road	82	66.4	0.8	24.7	37.1	10.2
Municipal Buildings	23	22.3	1.0	3.5	15.7	9.0
Parks and Trails	43	40.3	0.9	12.1	30.0	10.2
Port and Cruiseship	12	40.6	3.4	17.8	43.8	12.1
Public Transit						
Solid Waste Management						
Water and Wastewater	30	24.3	0.8	7.2	29.8	9.4
Total	235	438.3	1.9	181.3	41.4	9.2



Approved Claims

	Number of projects	Value of projects (\$M)	Average value (\$M)	Federal contribution (\$M)
Total approved claims	40	189.0	4.7	85.9
Total projects started	8	57.1	7.1	28.5
Total projects completed				
Total projects to start(ed) 2009-10	29	96.4	3.3	46.9
Total (to be) completed 2009-10	13	25.1	1.9	12.5
Total projects to start(ed) 2010-11	11	92.6	8.4	39.0
Total (to be) completed 2010-11	27	163.9	6.1	73.4
Value of work completed to date		12.0		
Total claimed (inc. provincial)		0.8		
ISF claim amount		0.4		

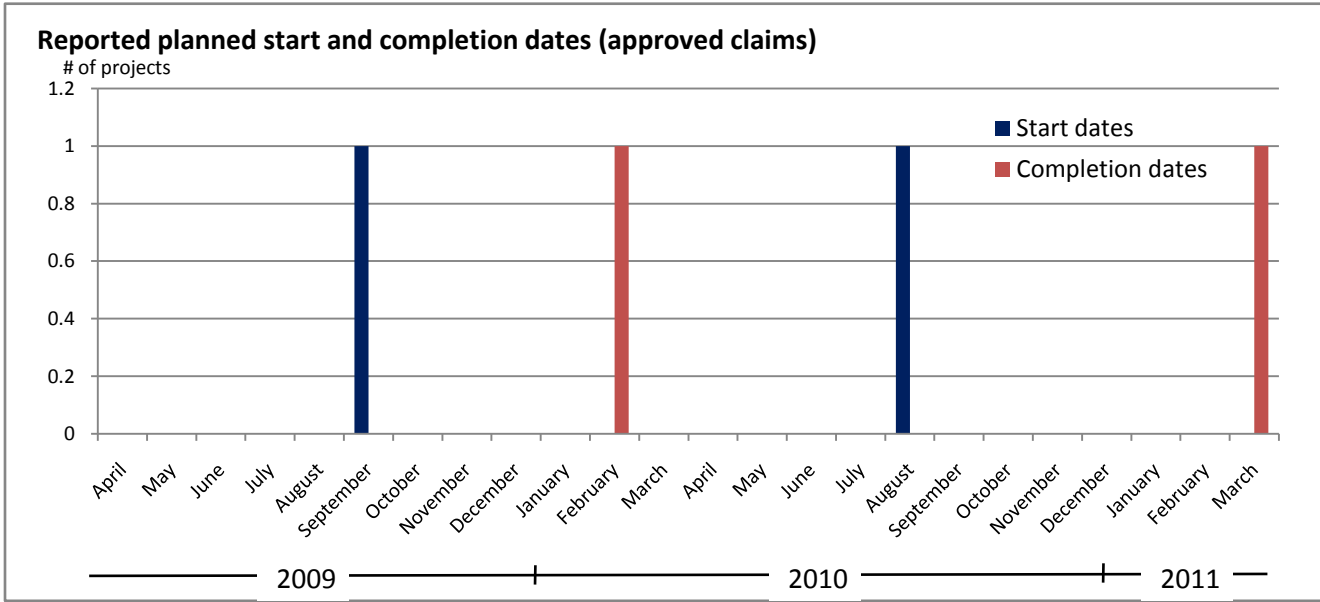
Average duration of approved projects (months) 6.8

	(per cent of projects)	(per cent of value)
Per cent of approved applications with approved claims	17.0	43.1

Nunavut

Approved Applications

Project type	Number of projects	Value of projects (\$M)	Average value (\$M)	Federal contribution (\$M)	Federal contribution (%)	Average duration (months)
Airport						
Brownfield Redevelopment						
Community Centres and Community Services						
Cultural						
Disaster Mitigation						
Highway & Regional Transit						
Local Road						
Municipal Buildings	2	7.2	3.6	3.2	44.8	14.0
Parks and Trails						
Port and Cruiseship						
Public Transit						
Solid Waste Management						
Water and Wastewater						
Total	2	7.2	3.6	3.2	44.8	14.0



Approved Claims

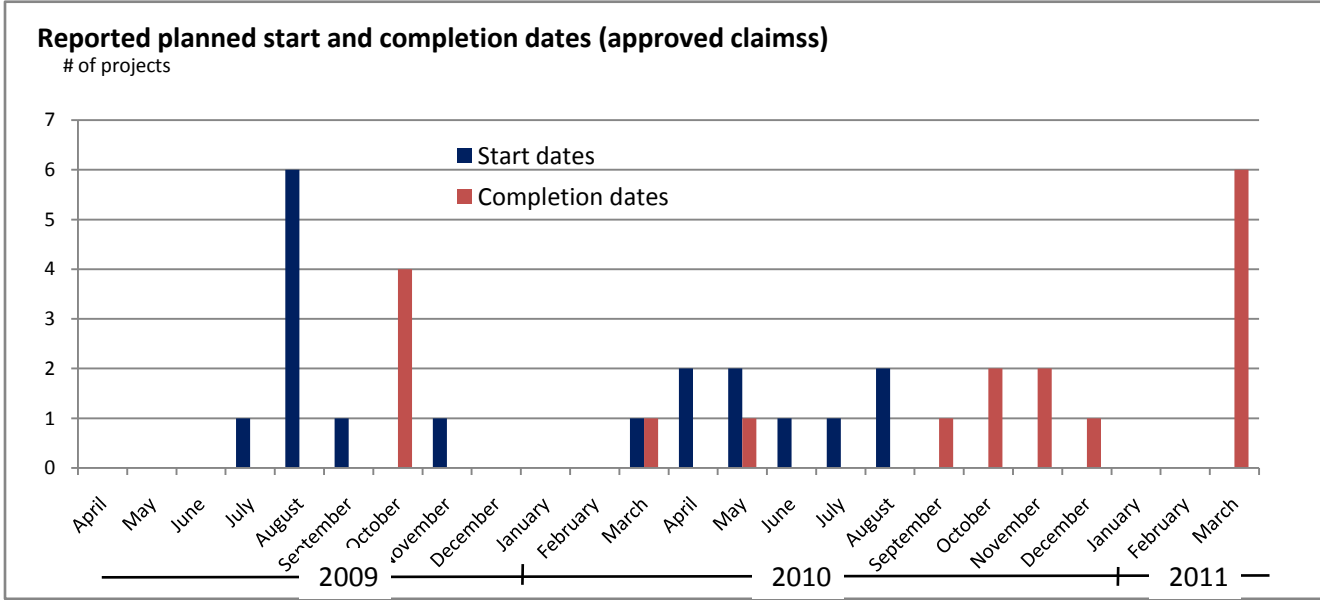
	Number of projects	Value of projects (\$M)	Average value (\$M)	Federal contribution (\$M)
Total approved claims	2	7.2	3.6	3.2
Total projects started				
Total projects completed				
Total projects to start(ed) 2009-10	1	2.2	2.2	0.7
Total (to be) completed 2009-10	1	2.2	2.2	0.7
Total projects to start(ed) 2010-11	1	5.0	5.0	2.5
Total (to be) completed 2010-11	1	5.0	5.0	2.5
Value of work completed to date				
Total claimed (inc. provincial)				
ISF claim amount				

Average duration of approved projects (months)		6.4
	(per cent of projects)	(per cent of value)
Per cent of approved applications with approved claims	100.0	100.0

North West Territories

Approved Applications

Project type	Number of projects	Value of projects (\$M)	Average value (\$M)	Federal contribution (\$M)	Federal contribution (%)	Average duration (months)
Airport	3	3.2	1.1	1.6	50.0	19.0
Brownfield Redevelopment						
Community Centres and Community Services						
Cultural						
Disaster Mitigation						
Highway & Regional Transit						
Local Road	1	0.5	0.5	0.2	50.0	20.0
Municipal Buildings	3	1.1	0.4	0.5	50.0	13.3
Parks and Trails	8	1.4	0.2	0.7	50.0	3.7
Port and Cruiseship						
Public Transit						
Solid Waste Management	1	2.0	2.0	0.7	34.2	8.0
Water and Wastewater	2	1.3	0.7	0.7	50.0	18.9
Total	18	9.4	0.5	4.4	46.6	10.7



Approved Claims

	Number of projects	Value of projects (\$M)	Average value (\$M)	Federal contribution (\$M)
Total approved claims	18	9.4	0.5	4.4
Total projects started	8	1.4	0.2	0.7
Total projects completed				
Total projects to start(ed) 2009-10	10	3.4	0.3	1.7
Total (to be) completed 2009-10	5	0.6	0.1	0.3
Total projects to start(ed) 2010-11	8	6.1	0.8	2.7
Total (to be) completed 2010-11	13	8.8	0.7	4.1
Value of work completed to date		0.6		
Total claimed (inc. provincial)				
ISF claim amount				

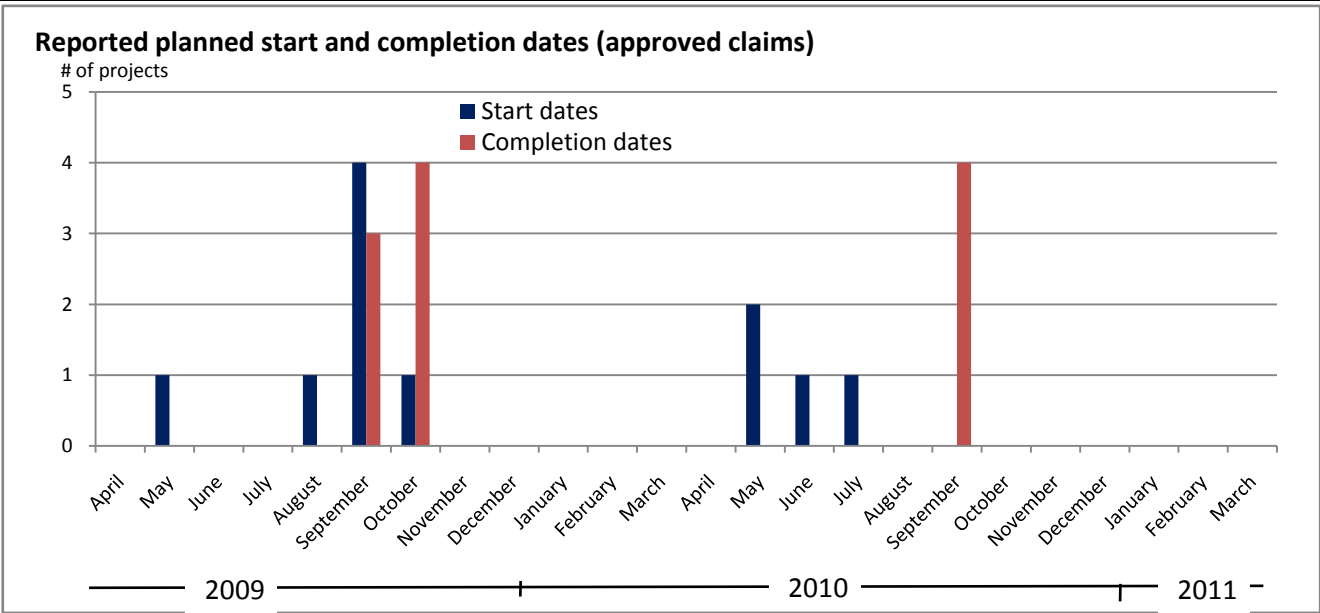
Average duration of approved projects (months) 8.2

	(per cent of projects)	(per cent of value)
Per cent of approved applications with approved claims	100.0	100.0

Yukon

Approved Applications

Project type	Number of projects	Value of projects (\$M)	Average value (\$M)	Federal contribution (\$M)	Federal contribution (%)	Average duration (months)
Airport						
Brownfield Redevelopment						
Community Centres and Community Services						
Cultural						
Disaster Mitigation						
Highway & Regional Transit	2	1.7	0.8	0.8	48.5	3.5
Local Road	9	5.4	0.6	2.7	50.0	3.4
Municipal Buildings						
Parks and Trails						
Port and Cruiseship						
Public Transit						
Solid Waste Management						
Water and Wastewater						
Total	11	7.1	0.6	3.5	49.6	3.4



Approved Claims

	Number of projects	Value of projects (\$M)	Average value (\$M)	Federal contribution (\$M)
Total approved claims	11	7.1	0.6	3.5
Total projects started	4	0.4	0.1	0.2
Total projects completed	2	0.1	0.1	0.1
Total projects to start(ed) 2009-10	7	0.8	0.1	0.4
Total (to be) completed 2009-10	7	0.8	0.1	0.4
Total projects to start(ed) 2010-11	4	6.3	1.6	3.1
Total (to be) completed 2010-11	4	6.3	1.6	3.1
Value of work completed to date		0.2		
Total claimed (inc. provincial)		0.0		
ISF claim amount		0.0		

Average duration of approved projects (months)	2.5
--	-----

	(per cent of projects)	(per cent of value)
Per cent of approved applications with approved claims	100.0	100.0

Canada

Approved Applications

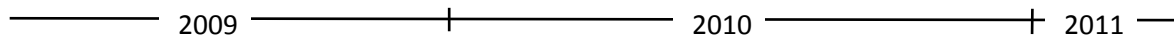
Project type	Number of projects	Value of projects (\$M)	Average value (\$M)	Federal contribution (\$M)	Federal contribution (%)	Average duration (months)
Airport	12	49.3	4.1	17.0	34.4	13.4
Brownfield Redevelopment	2	2.0	1.0	0.7	33.3	11.9
Community Centres and Community Services	11	98.4	8.9	34.7	35.3	13.9
Cultural	76	348.1	4.6	124.3	35.7	9.5
Disaster Mitigation	6	53.0	8.8	20.9	39.5	14.5
Highway & Regional Transit	443	1,914.6	4.3	917.4	47.9	6.6
Local Road	1,031	1,314.8	1.3	436.8	33.2	11.6
Municipal Buildings	300	806.1	2.7	265.3	32.9	10.1
Parks and Trails	271	251.7	0.9	86.3	34.3	13.3
Port and Cruiseship	21	172.1	8.2	78.7	45.8	12.4
Public Transit	52	585.0	11.3	194.7	33.3	14.0
Solid Waste Management	25	43.7	1.7	14.6	33.4	11.3
Water and Wastewater	785	1,802.5	2.3	587.7	32.6	14.6
Total	3,035	7,441.2	2.5	2,779.0	37.3	12.0

Approved Claims

	Number of projects	Value of projects (\$M)	Average value (\$M)	Federal contribution (\$M)
Total approved claims				
Total projects started				
Total projects completed				
Total projects to start(ed) 2009-10				
Total (to be) completed 2009-10				
Total projects to start(ed) 2010-11				
Total (to be) completed 2010-11				
Value of work completed to date				
Total claimed cost				
ISF Approved Claim amount				

Reported planned start and completion dates (approved claims)

of projects



Average duration of approved projects (months)

(per cent of projects)	(per cent of value)
------------------------	---------------------

Per cent of approved applications with approved claims